

# SHORE ECOSYSTEM WALK

90 minute youth activity



**NNV** NÁTTÚRUSTOFA  
NORÐURLANDS  
VESTRA

## Who is it for?

- School groups, youth groups
- Up to 25 students
- 12-14 years old

## Materials:

- Laminated sheets showing shore zonation
- Measuring tape

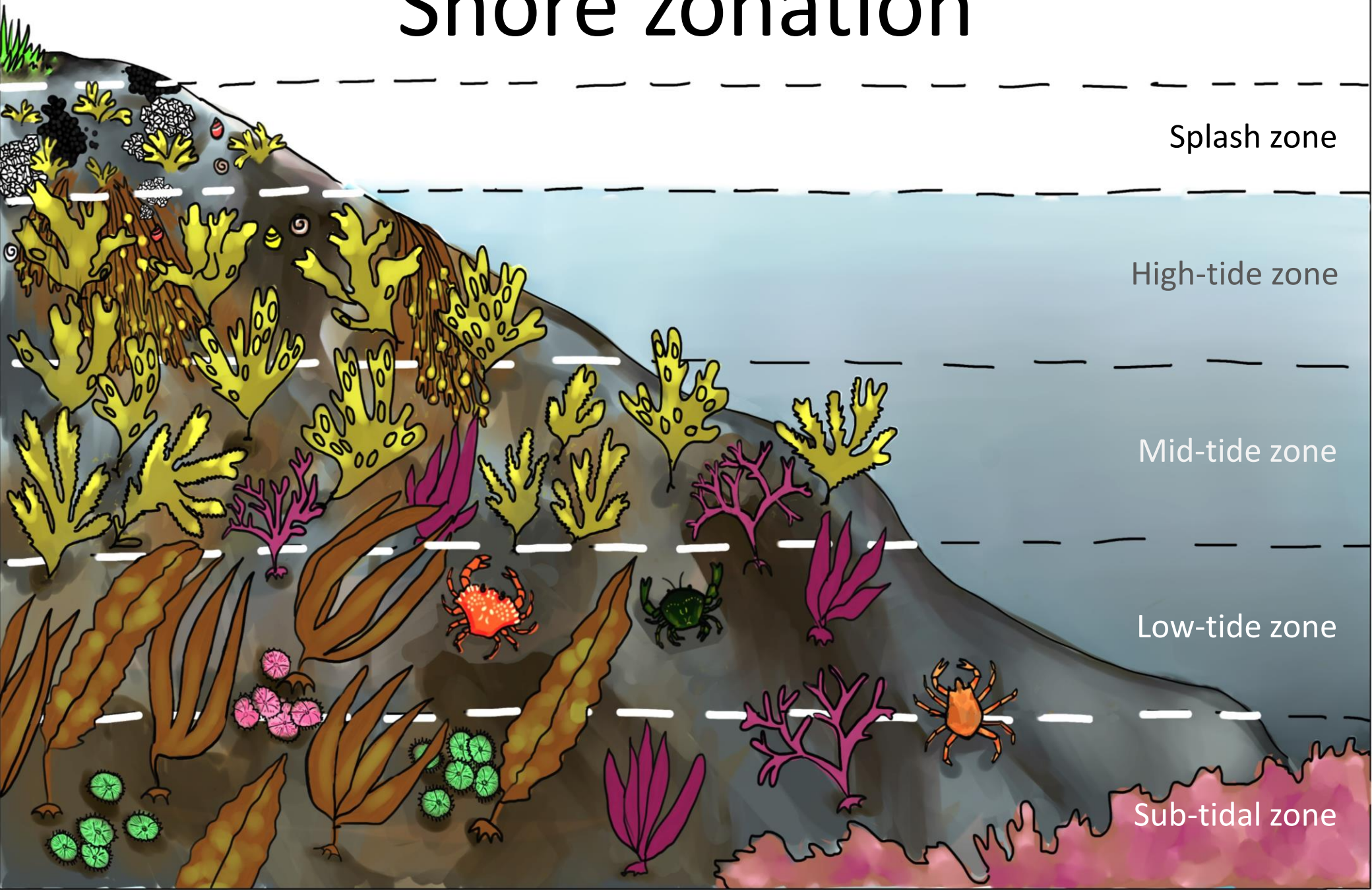
## When and where:

- Rocky Icelandic beach
- Best in spring to early autumn
- Best during low tide

## Protocol (times to be re-evaluated):

1. **Walking to the beach (5 minutes)**
2. **What are we doing today? Why? (10 minutes)**
  - Explain that we are looking at different things, animals, and seaweed around the coast
  - Learning about the importance of large brown algae and kelp in littoral zones
    - Equivalent of Arctic and temperate forests: more than 50% of oxygen on Earth produced in littoral zones
    - Forming nurseries, habitats, and zones of reproduction for fish and other marine life
3. **Discovering the layers of habitats (1 hour)**
  - Splash zones: looking at tide pools and finding snails and barnacles
  - High and mid-tide: Looking at seaweed bladders, trying to find red, brown, and green algae
  - Low-tide zone: Measuring kelp

# Shore zonation



Splash zone

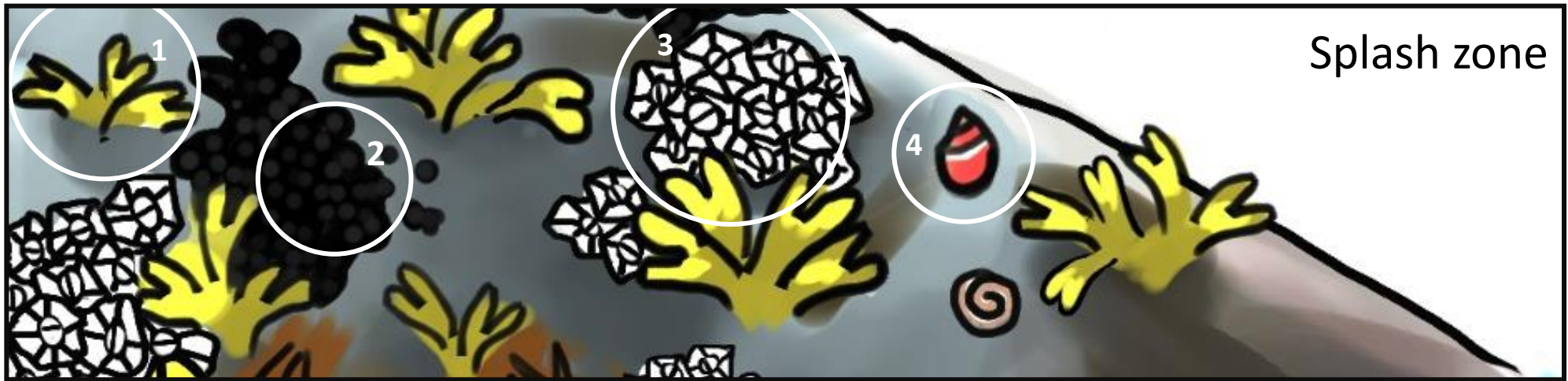
High-tide zone

Mid-tide zone

Low-tide zone

Sub-tidal zone

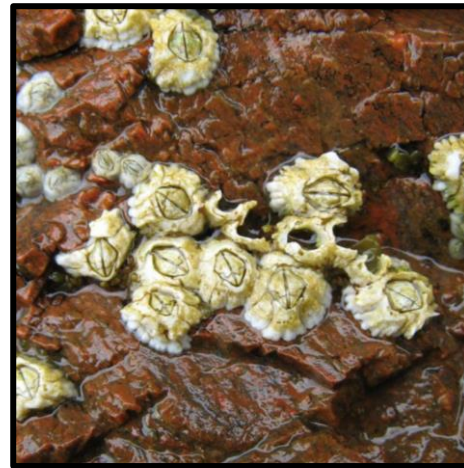




1. Channeled wrack  
*Pelvetia canaliculata*



2. Wart lichen  
*Hydropunctaria maura*



3. Acorn barnacles  
*Semibalanus balanoides*



4. Rough periwinkle  
*Littorina saxatilis*





1. Atlantic dog whelk  
*Nucella lapillus*



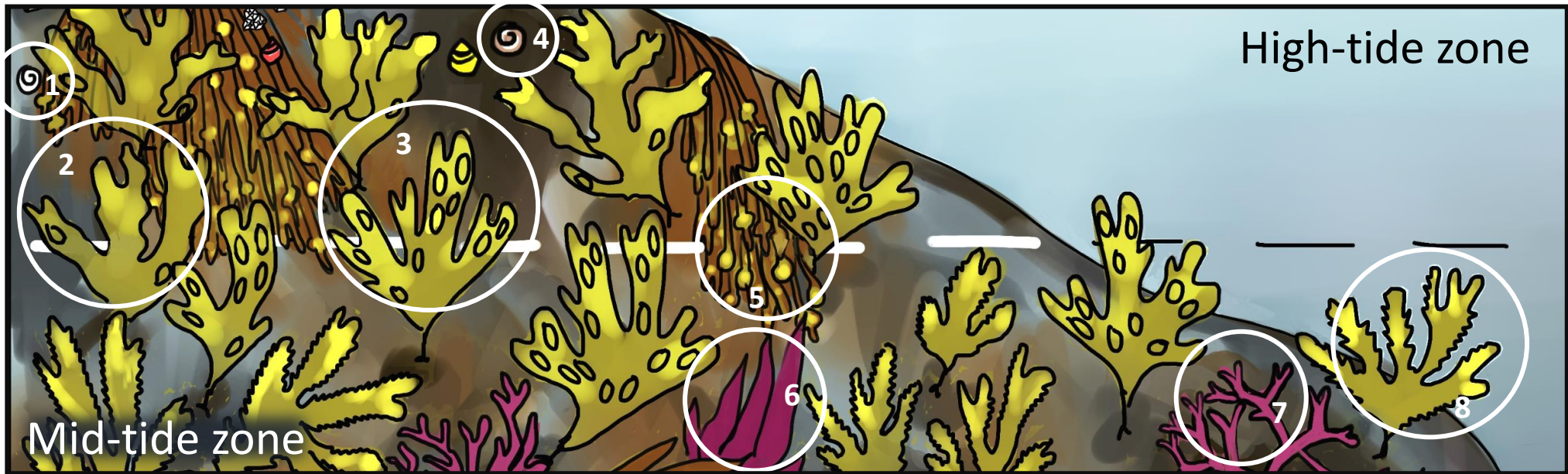
4. Flat periwinkle  
*Littorina obtusata*



5. Channeled wrack  
*Pelvetia canaliculata*



8. Saw wrack  
*Fucus serratus*



2. Spiral wrack  
*Fucus spiralis*



3. Bladder wrack  
*Fucus vesiculosus*



6. Dulse  
*Palmaria palmata*



7. Irish moss  
*Chondrus crispus*





3. Atlantic rock crab  
*Cancer irroratus*



6. European green crab  
*Carcinus maenas*



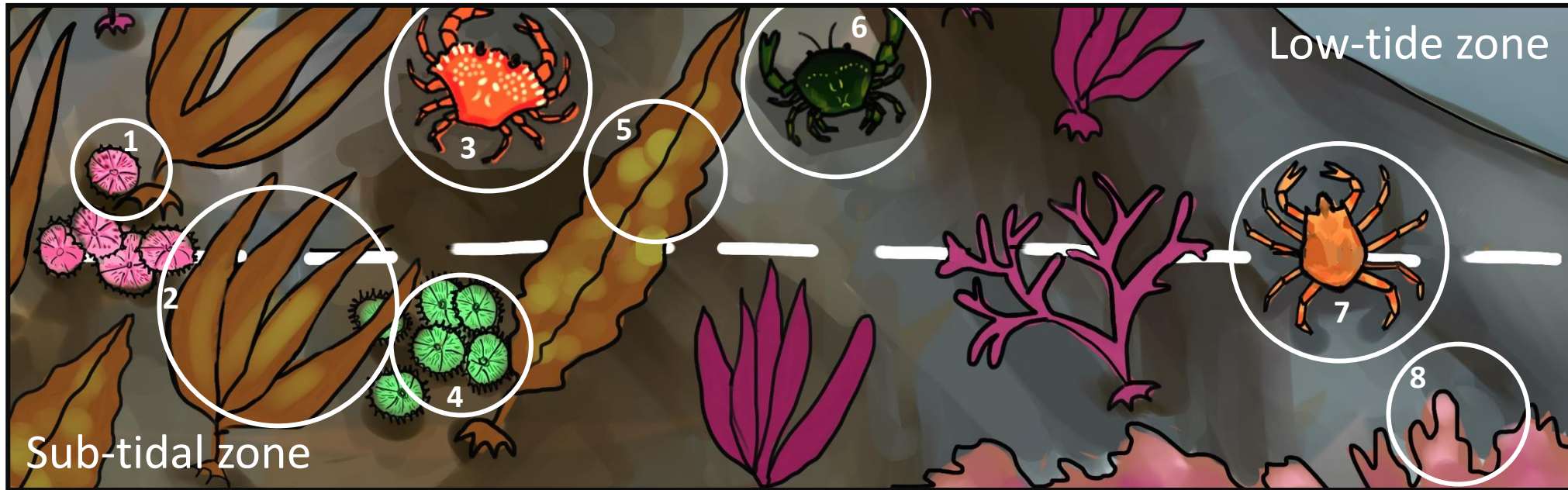
Norway king crab  
*Lithodes maja*



7. Arctic lyre crab  
*Hyas coarctatus*



Great spider crab  
*Hyas araneus*



1. Common sea urchin  
*Echinus esculentus*



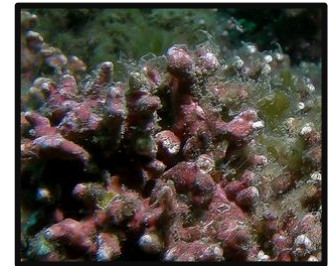
2. Oarweed  
*Laminaria digitata*



4. Green sea urchin  
*Strongylocentrotus droebachiensis*



5. Sugar kelp  
*Saccharina latissima*



8. Maerl  
*Coralline red algae species*

# Photo credits

## Splash zone

1. "[Chanelled Wrack \(Pelvetia canaliculata\)](#)" by [swan-scot](#) is licensed under [CC BY-NC-ND 2.0](#).
2. "[Hydropunctaria maura](#)" by [thomasschreiter](#) is licensed under [CC BY-NC 4.0](#).
3. "[Acorn Barnacles \(Semibalanus balanoides\)](#)" by [swan-scot](#) is licensed under [CC BY-NC-ND 2.0](#).
4. "[Rough Periwinkles \(Littorina saxatilis\)](#)" by [S. Rae](#) is licensed under [CC BY 2.0](#).

## High-tide and mid-tide zones

1. "[Nucella lapillus](#)" by [BrentMWilson](#) is licensed under [CC BY-NC-SA 2.0](#).
2. "[Fucus spiralis](#)" by [Hans Hillewaert](#) is licensed under [CC BY-NC-ND 2.0](#).
3. "[File:Bladder Wrack \(Fucus vesiculosus\) - geograph.org.uk - 224125.jpg](#)" by [Anne Burgess](#) is licensed under [CC BY-SA 2.0](#).
4. "[Littorina obtusata](#)" by [Sergey Yeliseev](#) is licensed under [CC BY-NC-ND 2.0](#).
5. "[Ascophyllum nodosum](#)" by [bstarzomski](#) is licensed under [CC BY-NC 4.0](#).
6. "[Palmaria palmata](#)" by [jaro](#) is licensed under [CC BY-NC 4.0](#).
7. "[Chondrus crispus Helgoland](#)" by [Gabriele Kothe-Heinrich](#) is licensed under [CC BY-SA 3.0](#).
8. "[Fucus serratus. Breaksea Point, October 1982](#)" by [Mary Gillham Archive Project](#) is licensed under [CC BY 2.0](#).

## Low-tide and sub-tidal zones

1. "[Oursin melon \(Echinus esculentus\)](#)" by [cquintin](#) is licensed under [CC BY-NC 2.0](#).
2. "[Laminaria digitata](#)" by [mainebirder](#) is licensed under [CC BY 4.0](#).
3. "[Cancer irroratus](#)" by [BrentMWilson](#) is licensed under [CC BY-NC-SA 2.0](#).
4. "[Strongylocentrotus droebachiensis](#)" by [lauracgoetz](#) is licensed under [CC BY-NC 4.0](#).
5. "[Saccharina latissima](#)" by [eagleloft](#) is licensed under [CC BY-NC 4.0](#).
6. "[Caranguejo-verde \(Carcinus maenas\)](#)" by [Emerging Birder](#) is licensed under [CC BY-NC-SA 2.0](#).
7. "[Lithodes maja](#)" by [viktorvg](#) is licensed under [CC BY-NC 4.0](#).
7. "[Hyas coarctatus Leach, 1815](#)" by IMARES is licensed under [CC BY-NC-SA 4.0](#).
7. "[Hyas araneus](#)" by [msciamanda](#) is licensed under [CC BY-NC 4.0](#).
8. "[Fal and Helford Maerl Beds](#)" by [naturalengland](#) is licensed under [CC BY-NC-ND 2.0](#).